

Technical data

Pump name

150x100 FS2KA 5 132

Customer	Date	2021-05-06	Company
Contact	Item no.		Issued by
Phone	Project		Phone
E-mail	Project ID		E-mail

Requested data

1	Pump type	End Suction Volute Pump	Fluid	Water
2	Number of pumps / Reserve	1 / 0	Liquid temperature	°C
3	Flow	m ³ /h	Kin. viscosity	mm ² /s
4	Head	m	Vapour pressure	bar
5	Geodetic head	m	PH value	
6	Inlet pressure (pin)	bar	Density	kg/dm ³
7	Available system NPSH		Solids	Weight %
8	Ambient temperature	°C	20	

Pump

9	Pump name	150x100 FS2KA 5 132	Frequency	Hz	50		
10	Design	End Suction Volute Pump	Installation type	with base, motor			
11	Manufacturer	EBARA	Impeller Diameter	Max.	mm		
12	Speed	rpm		2900	Designed	mm	
13	No. of Stage	1			Min.	mm	
14	Connection	Suction side	JIS	16K	Flow	Operating	m ³ /h
15	Connection	Discharge side	JIS	16K		Max-	m ³ /h
16	Max Working Pressure	bar	16	Min-		m ³ /h	
17	Shut-off head	bar	14.25	Head	Operating	m	
18	Total weight	kg	See the table of "Dimensions".		- (Qmax.)	m	
19	Shaft power	kW			- (Qmin.)	m	
20				Max. Shaft Power at max. impeller	kW	133.76	
21	Required pump NPSH	m		Efficiency	%		

Materials

22	Casing	Cast iron	M.S.mating ring	Ceramic
23	Impeller	Bronze	M.S.seal ring	Carbon
24	Shaft	403 Stainless steel		
25	Casing ring	Bronze		
26	Ball bearing	.		
27	Mechanical seal	.		

Motor

28	Manufacturer	TECO	Insulation class	F	
29	Type	315SA_B3_132_3_400	Phases	3~	
30	Specific design	TEFC / 50 Hz / Pole pairs 1	Frame size	315 SA	
31	Rated power	kW	132	Weight	kg
32	Number of poles	2	Electric voltage	V	
33	Speed	rpm	2955	Electric current	A
34	Degree of protection	IP 55			
35					

Remarks

--

Performance curve

Pump name

150x100 FS2KA 5 132

Customer	Date	2021-05-06	Company
Contact	Item no.		Issued by
Phone	Project		Phone
E-mail	Project ID		E-mail

Requested data

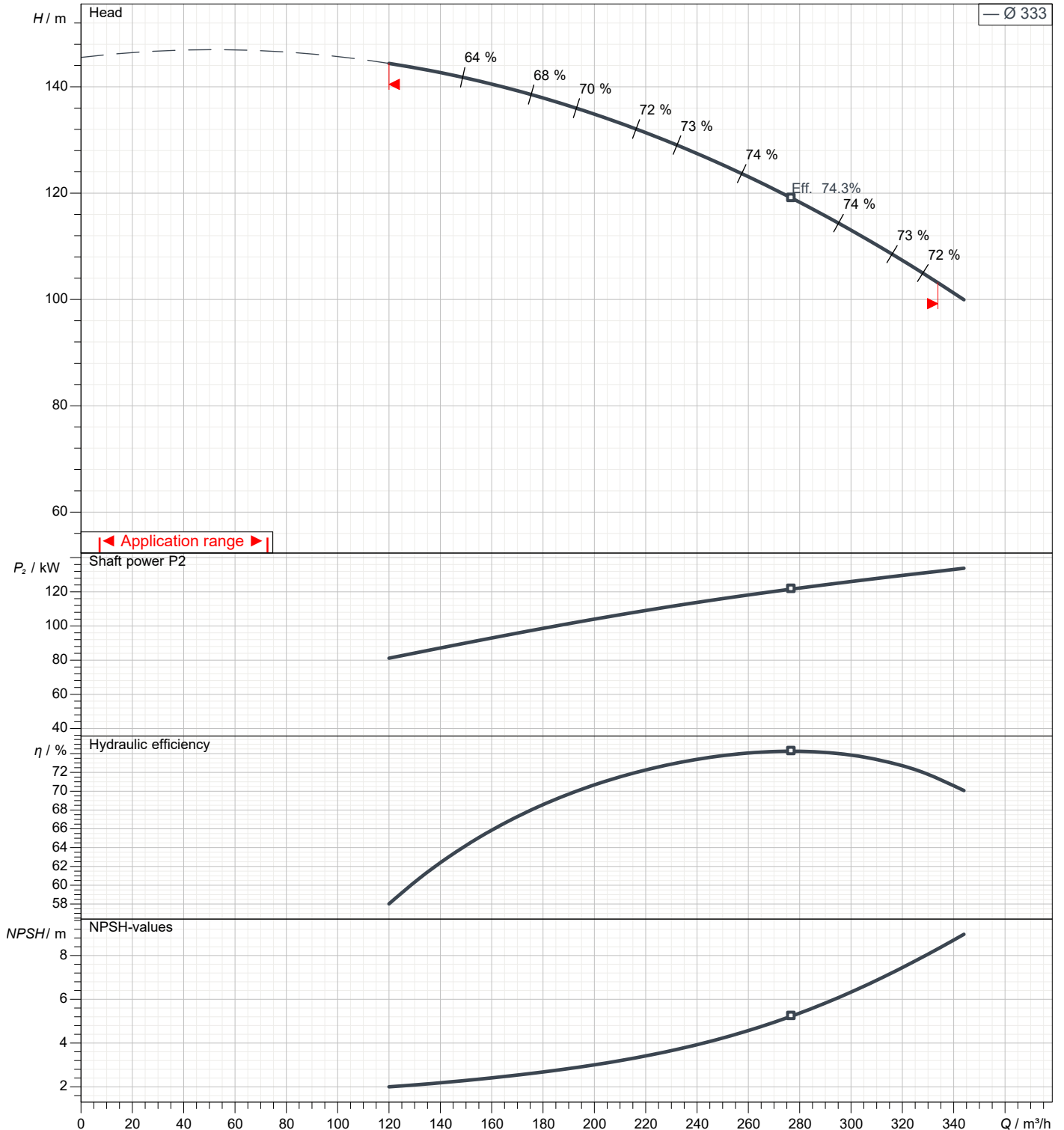
1	Flow	m³/h	
2	Head	m	
3	Geodetic head	m	

Pump

Operating Flow	m³/h		Frequency	Hz	50
Operating Head	m		Number of poles		2
Impeller Diameter Designed	mm	333	Speed	rpm	2900

Test standard: ISO 9906:2012 - Grade3B

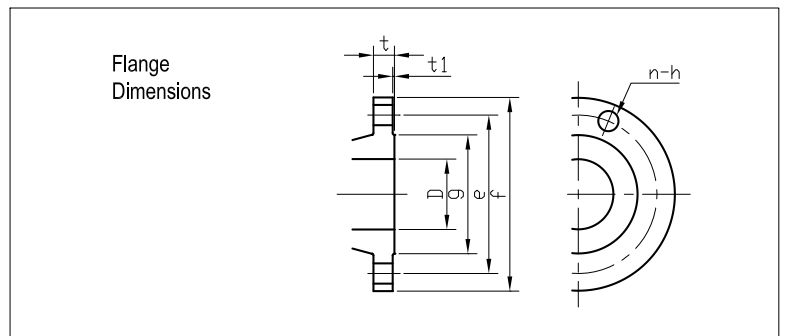
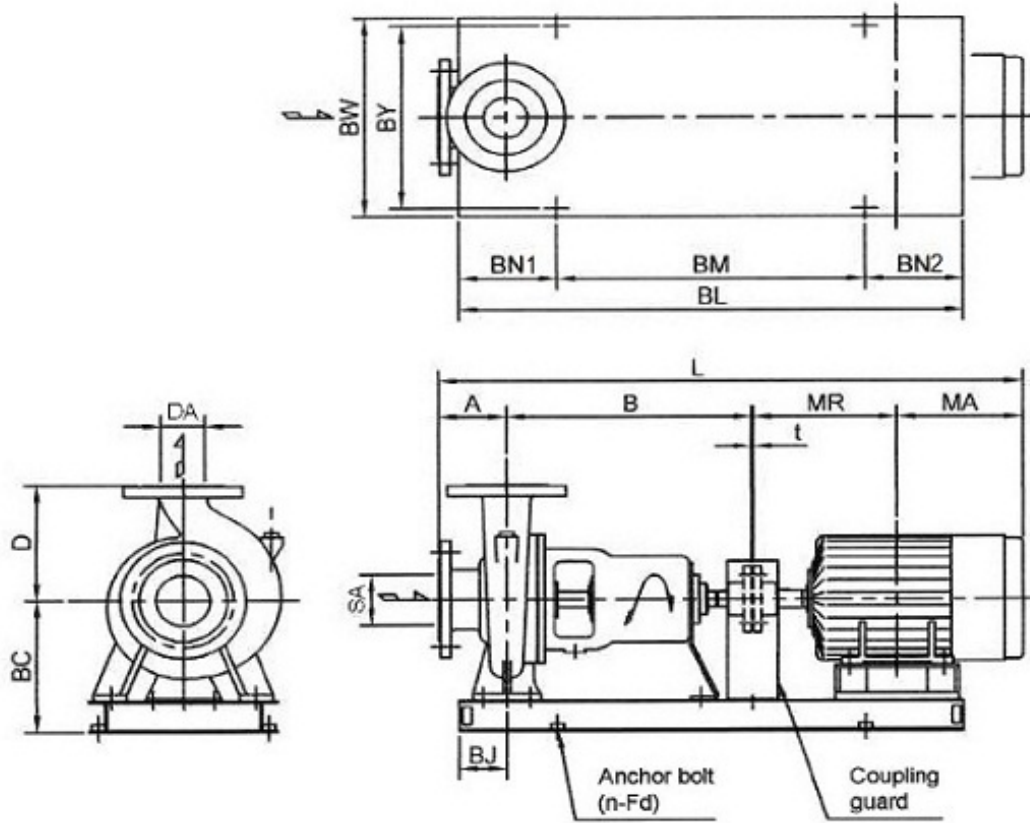
Water; 20°C; 0.9983kg/dm³; 1mm²/s



Dimensions

Pump name 150x100 FS2KA 5 132

Customer	Date 2021-05-06	Company
Contact	Item no.	Issued by
Phone	Project	Phone
E-mail	Project ID	E-mail



Total weight : 1261 kg

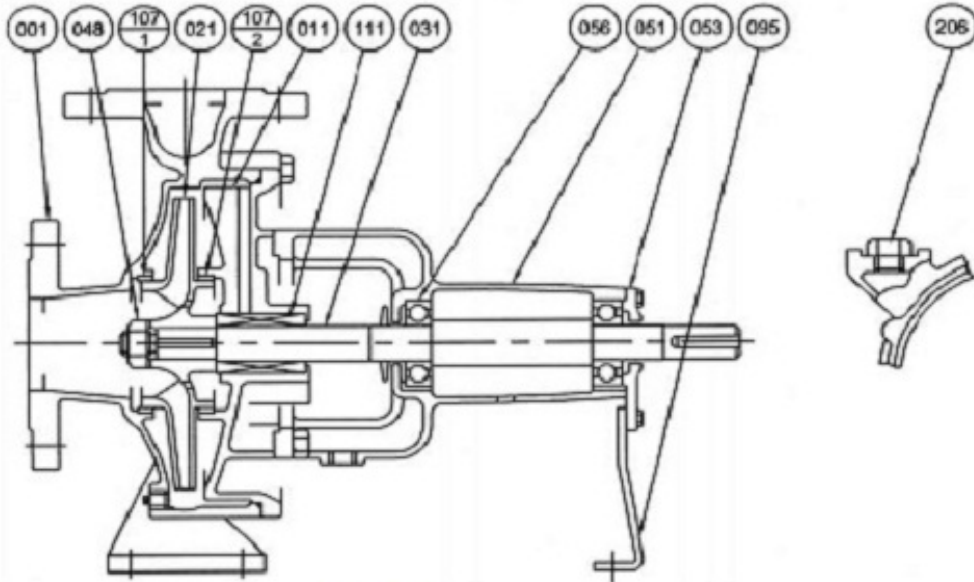
Pump dimensions				mm		Suction side		mm		Discharge side		mm	
A	140	MR	559	D	150	D	100						
B	530	n	6 (Num)	e	260	e	185						
BC	490	SA	150	f	305	f	225						
BJ	120	t	4	g	230	g	160						
BL	1500			h	25	h	23						
BM	2X575			n Num	12 (Num)	n Num	8 (Num)						
BN1	175			t	28	t	26						
BN2	175			t1	2	t1	2						
BW	660												
BY	630												
D	315												
DA	100												
Fd	M22												
L	1760												
MA	527												

(1/2)

Construction

Pump name 150x100 FS2KA 5 132

Customer	Date 2021-05-06	Company
Contact	Item no.	Issued by
Phone	Project	Phone
E-mail	Project ID	E-mail

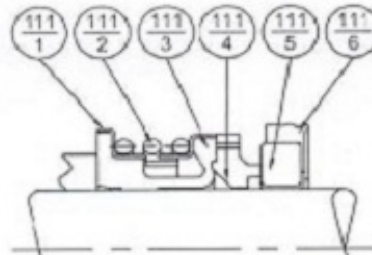
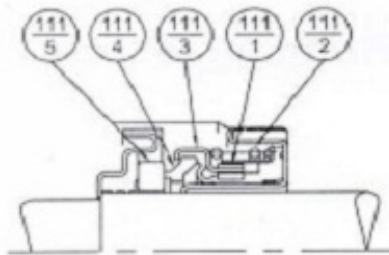


Model FH

50x40 FSHA; 65x50 FSHA, FSJA;
 80x65 FSGA, FSHA, FSJA, FSKA;
 100x80 FSGA, FSHA, FSJA;
 125x100 FSKA

Model EA

100x65 FSKA; 100x80 FSGCA, FSHCA;
 125x100 FSJCA, FSLA;
 150x100 FSKA, FSNA;
 150x125 FSHA, FSJA, FSKA, FSLA;
 200x150 FSHA, FSJA, FSKA, FSLA, FSNA;
 250x200 FSLA, FSNA

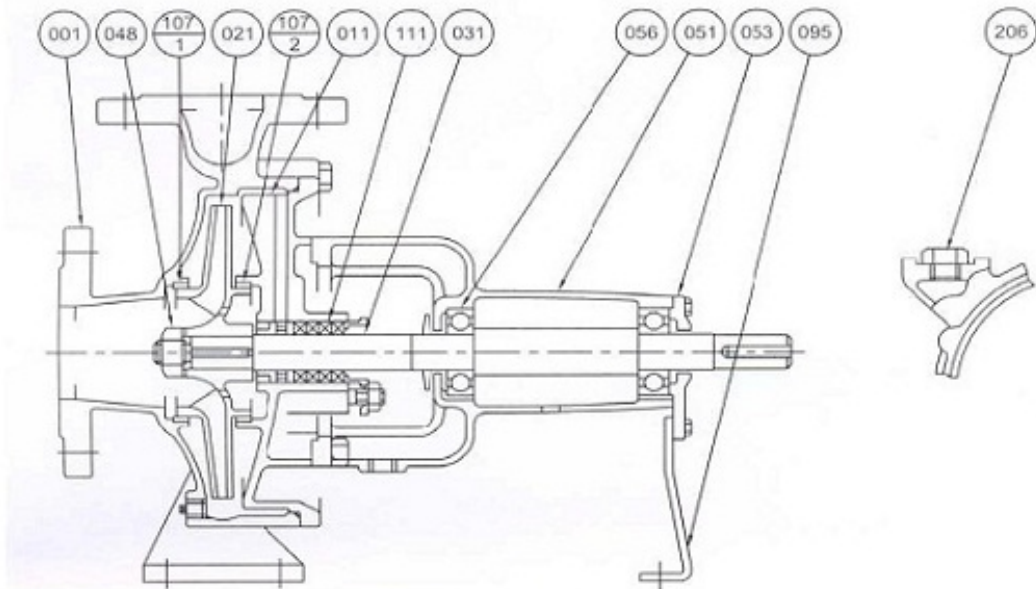


111-5	Mating Ring	Ceramic	1
111-4	Seal Ring	Carbon	
111-3	Friction Ring	NBR	
111-2	Coil Spring	Stainless Steel	
111-1	Spring Holder		
No.	Part Name	Material	Qty

111-6	Cup Gasket	NBR	1
111-5	Mating Ring	Ceramic	
111-4	Seal Ring	Carbon	
111-3	Bellows	NBR	
111-2	Spring	Stainless Steel	
111-1	Spring Holder		
No.	Part Name	Material	Qty

207	Plug	Steel	1
111	Mechanical Seal	-	
107-2	Casing Ring	Bronze	1
107-1	Casing Ring		
095	Stay	Steel	1
056	Ball Bearing	-	2
053	Bearing Cover	Cast Iron	1
051	Bearing Housing		
048	Impeller Nut	Brass	1
031	Shaft	Stainless Steel	
021	Impeller	Bronze	
011	Casing Cover	Cast Iron	
001	Casing		
No.	Part Name	Material	Qty

Customer	Date 2021-05-06	Company
Contact	Item no.	Issued by
Phone	Project	Phone
E-mail	Project ID	E-mail

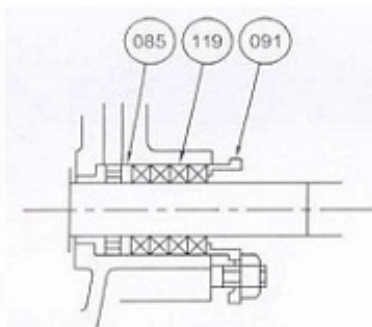


With Lantern Ring

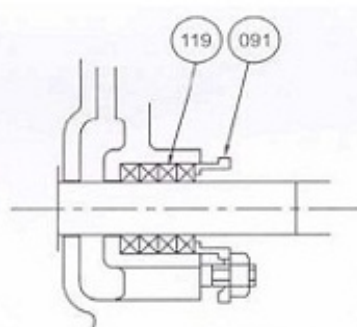
50x40 FSHA; 65x50 FSHA, FSJA;
 80x65 FSGA, FSHA;
 100x80 FSGA; 125x100 FSLA;
 150x100 FSKA, FSNA;
 150x125 FSKA, FSLA;
 200x150 FSJA, FSLA, FSNA;
 250x200 FSLA, FSNA

Without Lantern Ring

80x65 FSJA, FSKA;
 100x65 FSKA;
 100x80 FSHA, FSJA, FSGCA, FSHCA;
 125x100 FSJCA, FSKA;
 150x125 FSHA, FSJA;
 200x150 FSHA, FSKA;



119	Gland Packing	Non-Asbestos	4 or 5
091	Gland	Bronze	1
085	Lantern Ring		
No.	Part Name	Material	Qty



119	Gland Packing	Non-Asbestos	4 or 5
091	Gland	Bronze	1
No.	Part Name	Material	Qty

207	Plug	Steel	1
111	Gland Packing	Non-Asbestos	4 or 5
107-2	Casing Ring	Bronze	1
107-1	Casing Ring		
095	Stay	Steel	1
056	Ball Bearing	-	2
053	Bearing Cover	Cast Iron	1
051	Bearing Housing		
048	Impeller Nut	Brass	
031	Shaft	Stainless Steel	
021	Impeller	Bronze	
011	Casing Cover	Cast Iron	
001	Casing		
No.	Part Name	Material	Qty