

Technical data

Pump name

GS 65-200 /30

Customer	Date	2021-05-14	Company
Contact	Item no.		Issued by
Phone	Project		Phone
E-mail	Project ID		E-mail

Requested data

1	Pump type	End Suction Volute Pump	Fluid	Water
2	Number of pumps / Reserve	1 / 0	Liquid temperature	°C
3	Flow	m³/h	Kin. viscosity	mm²/s
4	Head	m	Vapour pressure	kPa
5	Geodetic head	m	PH value	
6	Inlet pressure (pin)	kPa	Density	kg/m³
7	Available system NPSH		Solids	Weight %
8	Ambient temperature	°C		

Pump

9	Pump name	GS 65-200 /30	Frequency	Hz	50	
10	Design	End Suction Volute Pump	Installation type	with ISO base, motor		
11	Manufacturer	EBARA	Impeller Diameter	Max.	mm	
12	Speed	rpm		2900	Designed	mm
13	No. of Stage	1		Min.	mm	162
14	Connection	Suction side	EN	PN16	Flow	
15	Connection	Discharge side	EN	PN16		
16	Max Working Pressure	kPa	1600			
17	Shut-off head	kPa	623.05	Head	Operating	
18	Total weight	kg	See the table of "Dimensions".		- (Qmax.)	m
19	Shaft power	kW			- (Qmin.)	m
20			Max. Shaft Power at max. impeller	kW	29.48	
21	Required pump NPSH	m	Efficiency	%		

Materials

22	Casing	FC250		
23	Impeller	FC200		
24	Shaft	SUS431eq.		
25	Case wear ring	CAC406		
26	O-ring	NBR		
27	Mechanical Seal	SiC/Carbon/FKM		

Motor

28	Manufacturer	TECHTOP	Insulation class	F	
29	Type	200L1_30_3_400	Phases	3~	
30	Specific design	TEFC/B3/IE3/TC / 50 Hz / Pole pairs 1	Frame size	200L1	
31	Rated power	kW	30	Weight	kg
32	Number of poles	2	Electric voltage	V	400
33	Speed	rpm	2925	Electric current	A
34	Degree of protection	IP55			
35					

Remarks

Performance curve

Pump name

GS 65-200 /30

Customer	Date	2021-05-14	Company
Contact	Item no.		Issued by
Phone	Project		Phone
E-mail	Project ID		E-mail

Requested data

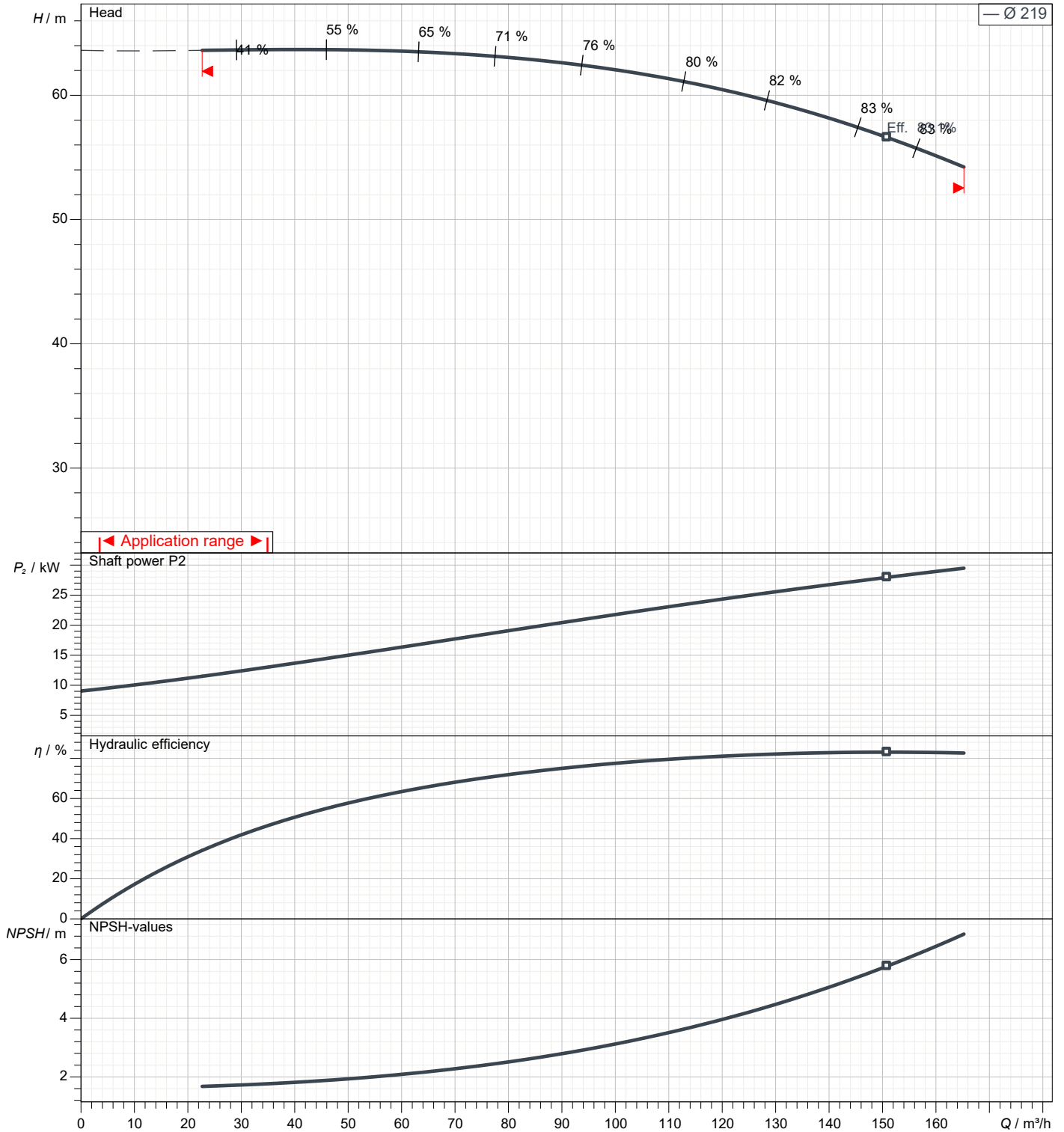
1	Flow	m ³ /h	
2	Head	m	
3	Geodetic head	m	

Pump

Operating Flow	m ³ /h		Frequency	Hz	50
Operating Head	m		Number of poles		2
Impeller Diameter Designed	mm	219	Speed	rpm	2900

Test standard: ISO 9906:2012 - Grade3B

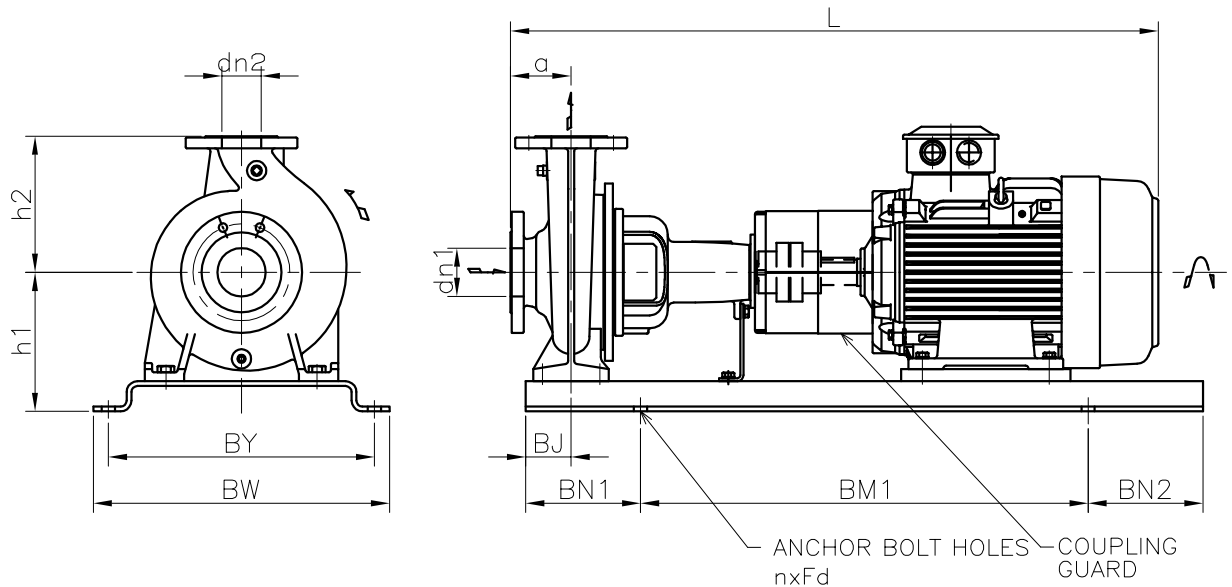
Water; 20°C; 998.3kg/m³; 1mm²/s



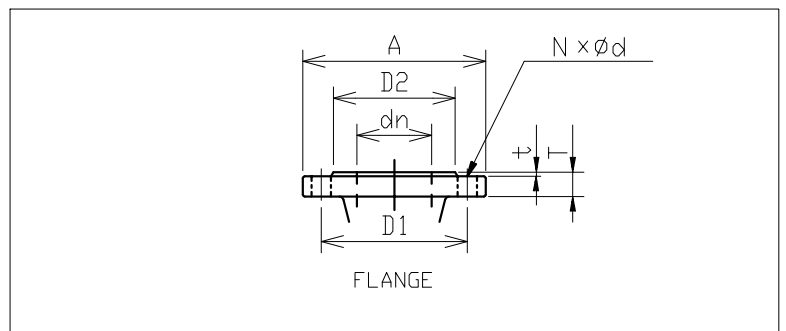
Dimensions

Pump name GS 65-200 /30

Customer	Date 2021-05-14	Company
Contact	Item no.	Issued by
Phone	Project	Phone
E-mail	Project ID	E-mail



This base is not necessary to grout.
Special base can be provided for grouting.



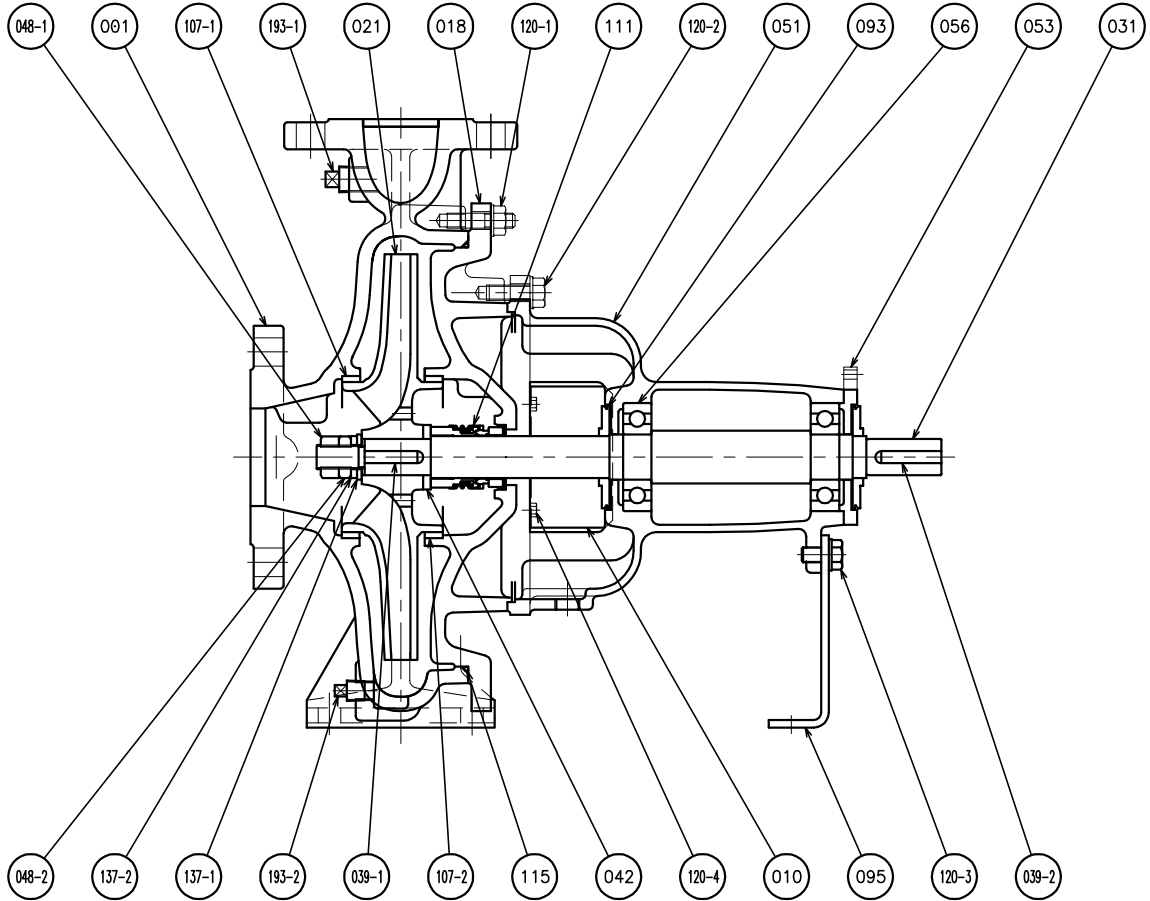
Total weight : 375 kg

Pump dimensions		mm	Suction side	mm	Discharge side	mm
a	100		A	200	A	185
dn1	80		d	19	d	19
dn2	65		D1	160	D1	145
h1	180		D2	132	D2	118
h2	225		dn	80	dn	65
L	1228		N	8(Num)	N	4(Num)
			t	2	t	2
			T	22	T	20

Construction

Pump name GS 65-200 /30

Customer	Date 2021-05-14	Company
Contact	Item no.	Issued by
Phone	Project	Phone
E-mail	Project ID	E-mail



193-2	PLUG	SS	1	CARBON STEEL
193-1	PLUG	SS	1	CARBON STEEL
137-2	SPRING LOCK WASHER	SUS304	1	304 STAINLESS STEEL
137-1	PLAIN WASHER	SUS304	1	304 STAINLESS STEEL
120-4	BOLT WITH WASHER	SS400	4	CARBON STEEL
120-3	BOLT WITH WASHER	SS400	1	CARBON STEEL
120-2	BOLT WITH WASHER	SS400	6	CARBON STEEL
120-1	BOLT & NUT WITH WASHER	SS400	N	CARBON STEEL
115	O RING	NBR	1	
111	MECHANICAL SEAL	-	1	
107-2	CASING RING	CAC406	1	BRONZE
107-1	CASING RING	CAC406	1	BRONZE
095	STAY	SPHC	1	CARBON STEEL
093	DEFLECTOR	EPDM	2	
056	BALL BEARING	-	2	
053	BEARING COVER	FC150	1	CAST IRON
051	BEARING HOUSING	FC150	1	CAST IRON
048-2	IMPELLER NUT(B)	SUS304	1	304 STAINLESS STEEL
048-1	IMPELLER NUT(A)	SUS304	1	304 STAINLESS STEEL
042	SPACER	SUS304	1	304 STAINLESS STEEL
039-2	KEY	S50C	1	CARBON STEEL
039-1	KEY	SUS420Q	1	12% Cr. STEEL
031	SHAFT	SUS431eq.	1	Cr. STEEL
021	IMPELLER	FC200	1	CAST IRON
018	CASING COVER	FC250	1	CAST IRON
010	PROTECTOR	SPCC	2	CARBON STEEL
001	CASING	FC250	1	CAST IRON
No.	NAME OF PART	MATERIAL	Qty	REMARKS