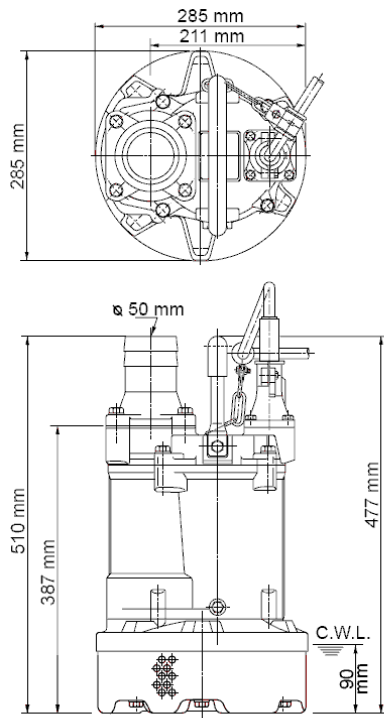
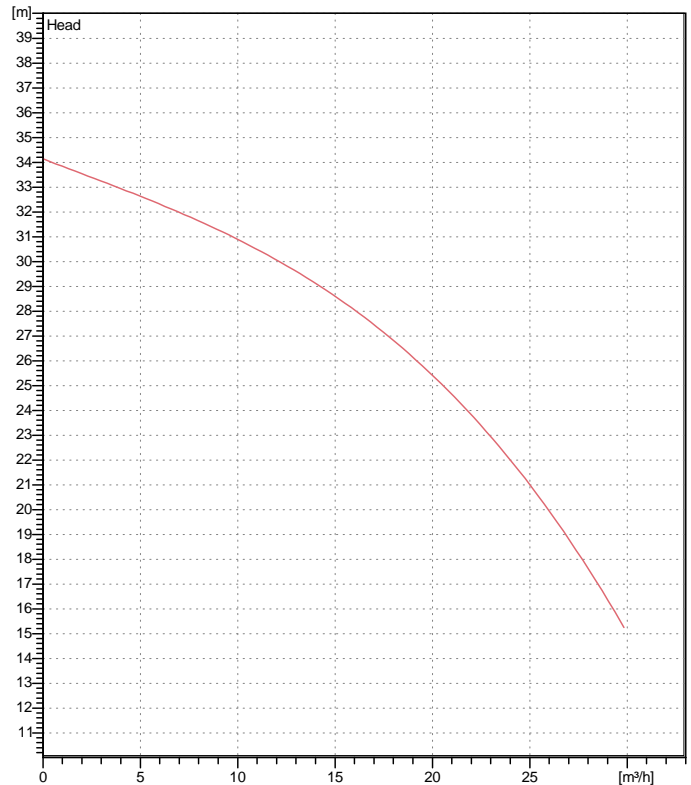


# Data sheet KTV2-37H



KTV2-37H

CWL: Continuous running water level



## Specification

Electric submersible pump  
 Degree of protection IP 68  
 Depth of submersion max. 50 m  
 Type of impeller semi-vortex  
 Max. solid handling 8,5 mm  
 Suitable for:  
 rain water, ground water, sand water

## Electric motor

Dry-type submersible induction motor  
 Insulation class E 2Poles 2875 1/min  
 Starting mode Directly  
 Rated voltage 400 V 50 Hz 3~  
 Power uptake 4,63 kW  
 Rated power 3,70 kW  
 Rated current 7,4 A  
 Start current 48,0 A

## Cable

20m H07RN-F 4Cx1,5mm²

## Motor Protection

Circle thermal protector  
 (snap-action bi-metal device)

## Shaft seal

Double inside mechanical seal in oil bath  
 additional lubrication by oil lifting device

Primary seal

Silicon carbide on silicon carbide

Secondary seal

Silicon carbide on silicon carbide

## Bearings

Shielded ball bearings, maintenance-free

## Materials

Impeller	FCD700 (EN-GJS-700-2)
Pump casing	Ruber
Motor Frame	Aluminium alloy casting
Shaft	Stainless steel SUS403

## Discharge size

2" (50mm) BS-Coupling (threaded flange)

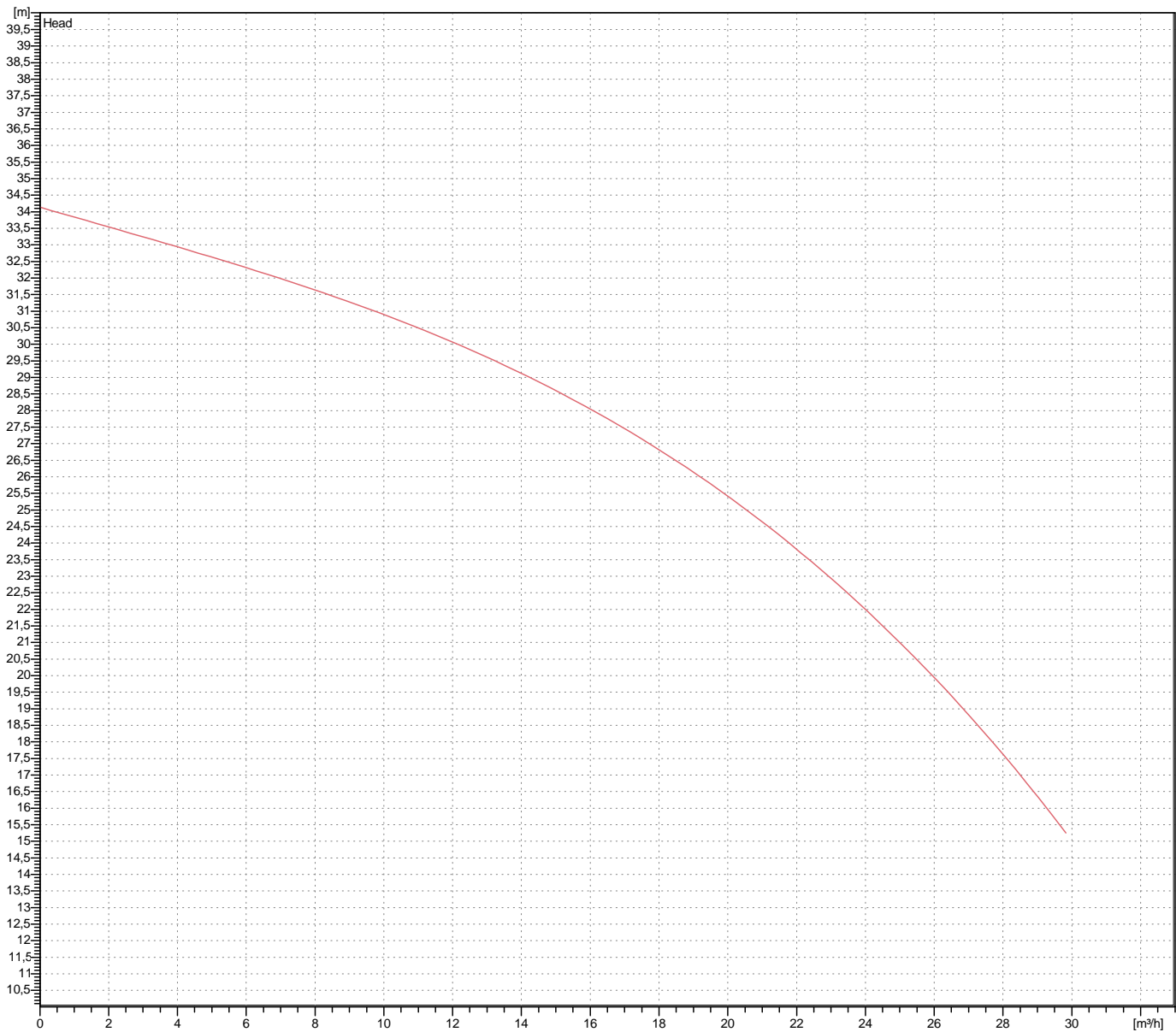
## Weight

36 kg (dry weight of the pump only without cable)

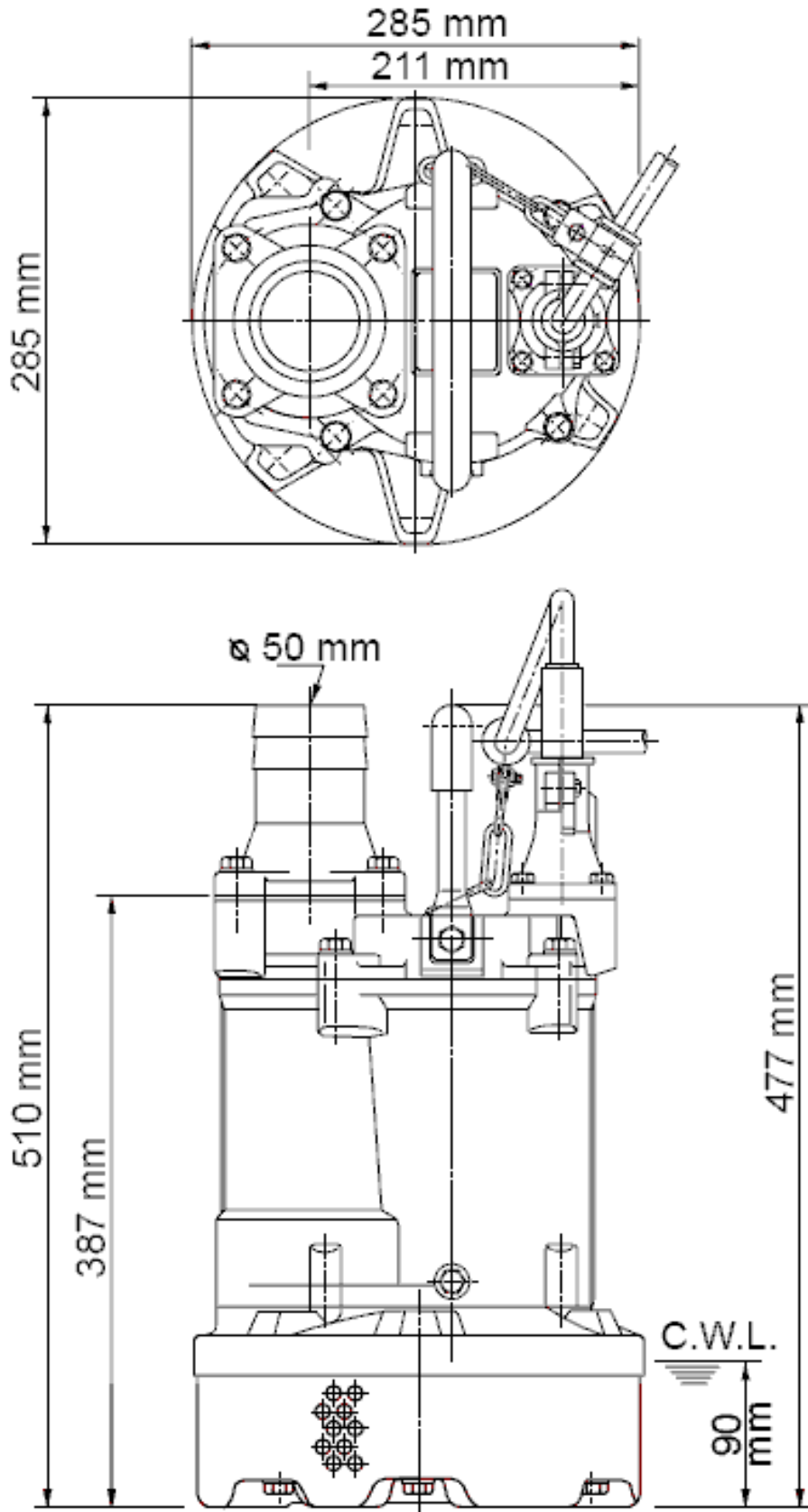
# Performance curve

## KTV2-37H

Discharge port	2"
Head	34,1 m
Flow	29,8 m <sup>3</sup> /h
Rated power	3,70 kW
Power input	4,63 kW
Phases	3~
Voltages	400 V
Frequency	50 Hz
Rated current	7,4 A
Starting current	48,03 A
Number of poles	2
Speed	2875 1/min
Starting mode	Directly
Insulation class	E



# Dimensions KTV2-37H



## KTV2-37H

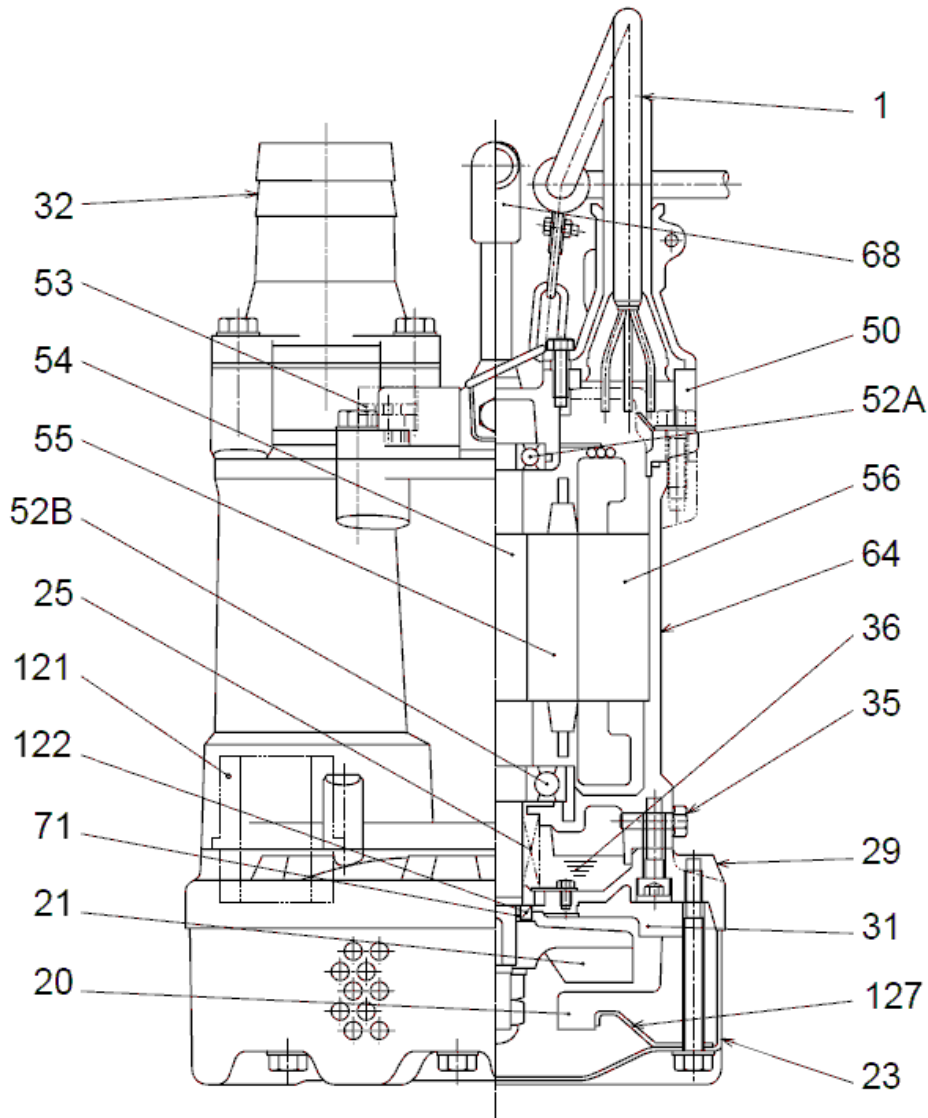
CWL: Continuous running water level  
LWL: Lowest running water level

 **TSURUMI PUMP**

Tsurumi Europe GmbH  
05.09.2011

Heltofer Str. 14 \* 40472 Düsseldorf \* Germany  
Tel.: +49-211-4179373 sales@tsurumi.eu  
Fax: +49-211-4791429 www.tsurumi.eu

# Sectional drawing KTV2-37H



No.	Denomination	Remark	No.	Denomination	Remark
1	Cable	H07RN-F	56	Stator	.
20	Pump casing	Ruber	64	Motor Frame	Aluminium alloy casting
21	Impeller	FCD700 (EN-GJS-700-2)	68	Handle	Steelplate + butadieneacrylnitrilerubber
23	Strainer	Steel plate	71	Shaft protection sleeve	Stainless steel SUS304
25	Mechanical seal	H-25	121	Seal	Ruber
29	Oil casing	Aluminium alloy casting	122	V-ring	Butadieneacrylnitrilerubber
31	Wear protection	Ruber	127	Pressure plate	Steel plate
32	Pressure socket	Aluminium alloy casting			
35	Oil screw	Stainless steel SUS304			
36	Lubricant	Turbine oil (ISO VG32)			
50	Main cover	Aluminium alloy casting			
52A	Upper bearing	6204ZZC3			
52B	Lower bearing	6306ZZC3			
53	Motor Protector	.			
54	Shaft	Stainless steel SUS403			
55	Rotor	.			